



Instructions

JEEP JK TABLET MOUNT

Thank you for purchasing your Jeep JK Tablet Mount from AAL! We greatly appreciate your trust in our company. We take that purchase and your commitment to us very seriously. If you have any questions along the way, please don't hesitate to give us a call at 385.202.4188.

****Please read these instructions thoroughly before starting this project.****

Tools Required:

There is more than one tool for every job, but below is the list of tools we use for this installation.

Tools listed are for assembly only, as disassembly tools will vary.

- Phillips heads screwdriver (optional)

Hardware included:

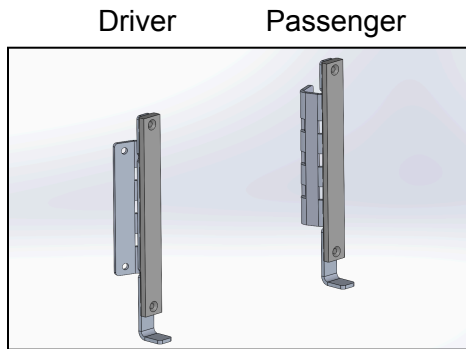
Tablet Adhesive-Magnetic Strips	2	Pan Head 8x5/8" Screw	4
Mounting Adhesive Strips	2		

Part Overview and Prep

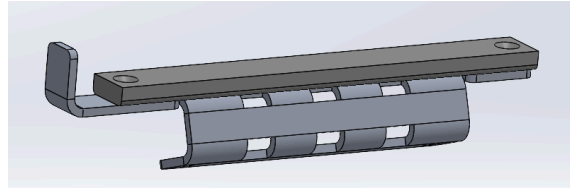
First lets review images of all the necessary parts and hardware to ensure we have everything we need for the installation process



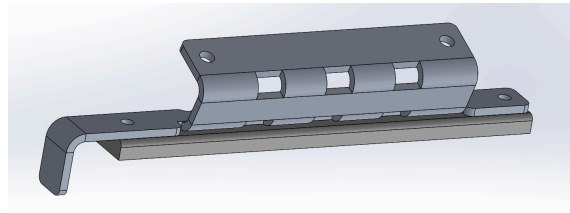
Tablet Mount Parts



Driver Mount Bracket (1):



Passenger Mount Bracket (1):



Hardware

Tablet Adhesive-Magnetic Strips 2



Mounting Adhesive Strips 2



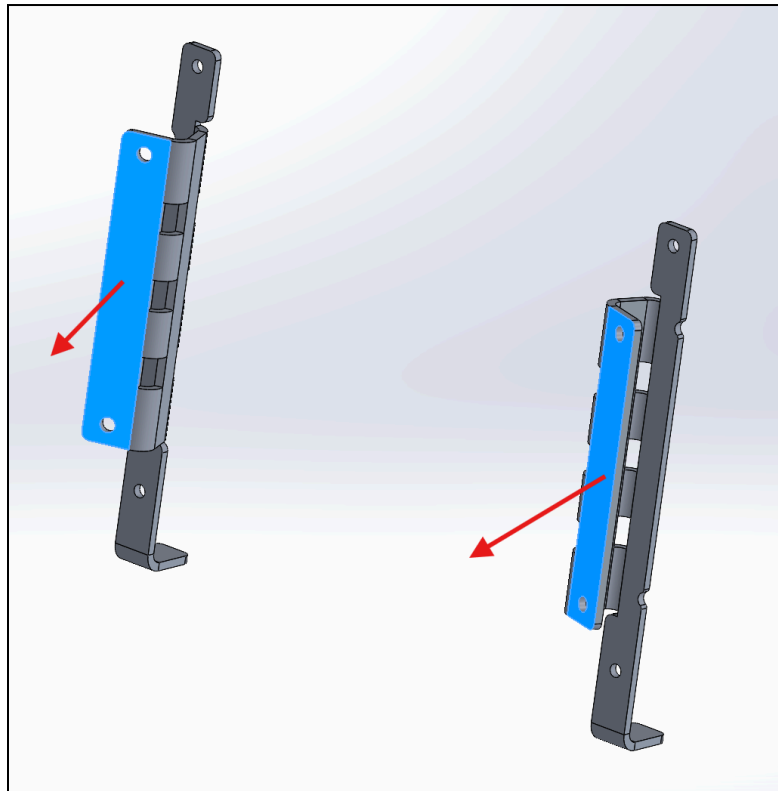
Pan Head 8x5/8" screw 4 (optional)



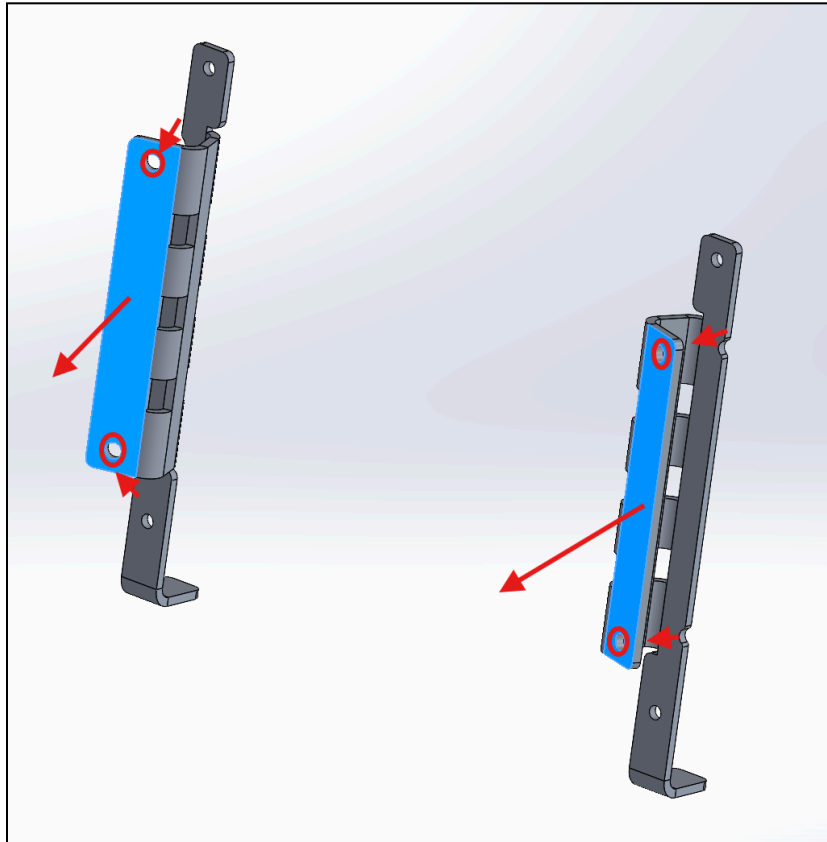
Step 1 - Attach the Mounting Brackets to your vehicle

The first step in installing your Jeep JK Tablet Mount is to attach the mounting brackets to the vehicle. There are two options for this.

- 1) Use the provided adhesive strips and attach one side to the highlighted face and the other to the sides of the radio console. This option is slightly less secure than the second but is the most practical for most cases.



- 2) Screw the highlighted face directly into the plastic surrounding the radio console with the adhesive strips already attached. This option is often more secure however, once screwed the holes cannot be easily repaired so only do this option if you're confident in keeping the mount long term or if you don't mind having these holes visible if the mount is removed.



Regardless of your installation method choice, the brackets should appear as follows:



Step 2 - Attach the Tablet Attachment Strips to Your Device

The second and final step in installing your Jeep JK Tablet Mount is to attach the magnetic strips to your tablet, or tablet case if you have one. Ensure that the vertical alignment between strips is flush and that the horizontal spacing between them aligns with the horizontal spacing of the magnets between the two mounting brackets. Once the strips are carefully applied simply set the tablet onto the magnets of the brackets and viola, your tablet mount is good to go!



Step 3: Share Your Photos

We take great pride in building our products and we hope that pride extends to you after installing your Jeep JK Tablet Mount. If you are able to share your photos online (Facebook and Instagram), please tag **@AmericanAdventureLab**. We would love to see how it turned out and give you some reciprocal attention in return!

Congrats! You're all done!

Thank you!

At American Adventure Lab, we strive to improve anywhere we can. If you experience any issues with this product or have any suggestions, please let us know.

If you have any questions or concerns, please don't hesitate to reach out to us at 385.202.4188 or via email at Support@erp.adventurelab.com.

